

## Transportable Polo Court Edging

### Materials

4 x 2.1m x 70mm x 19mm timber planks  
 3 x hinges, pref. close to 70x19mm  
 18 screws, 8G x 50mm CS

### Optional

8 x 50cm x 35mm x 5mm timber  
 8 screws, 4G x 15mm CS  
 paint

### Tools

Drill & bits  
 Screwdriver  
 Marker  
 Clamps  
 Workbench or sawhorse

### Construction

While buying materials, ensure your screws fit the hinges, in particular that their heads match the countersinking. Use long screws where possible, ensuring you have a drill bit long enough for the pilot holes. Mark out the holes for the hinges with a marker by holding the hinge in place and tracing the inside edge. Position hinges so that the edging will unfold in a zigzag pattern, and so that it folds neatly during transit.

Clamp timber to bench or sawhorse and carefully drill pilot holes for each screw - get a friend to ensure the drill is at the right angle, or use a drill press if one is available. Use a slightly larger bit than recommended to avoid splitting the timber.

### Optional

Screw or glue additional pieces of timber, half the height of the edging, or less, to the bottom edge of the edging to help provide additional support, and minimise buckling during transit and storage - use scrap timber that is the same width as the hinges, and take note of how the edging folds together and place scraps accordingly. You may also wish to paint the finished edging to weatherproof it, and to prepare it for being covered in trendy urban graffiti, and/or obscure band and political stickers.

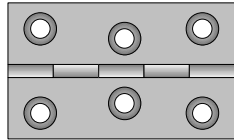
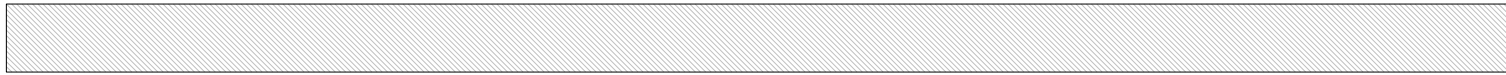
### Transportation

You may wish to unscrew one side of the center hinge and separate the edging into two halves, so that they can be attached to a bike frame with optimal weight distribution.

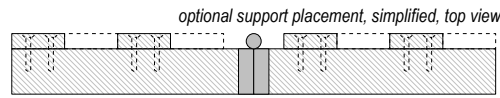
### Future Development

While this design does stand up to being occasionally cycled over, it would be possible to build lighter edging with timber the same length and thickness, but only half as tall, ie 35mm. To still be able to keep the ball in play (the whole point!) you would have to attach a thin barrier, such as squares of corflute signage. Polo players would have to be encouraged not to ride over any edging built to this specification. On this basis, one person could then theoretically carry 16.8m of edging, and five could edge a court in its entirety from scratch.

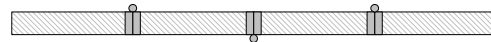
designed by alex4point0@gmail.com



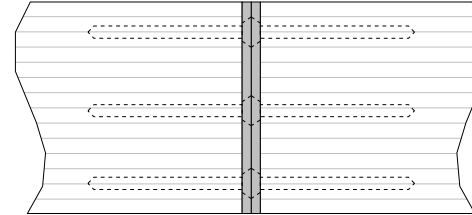
Turns out I didn't need this - but it's too pretty to delete.



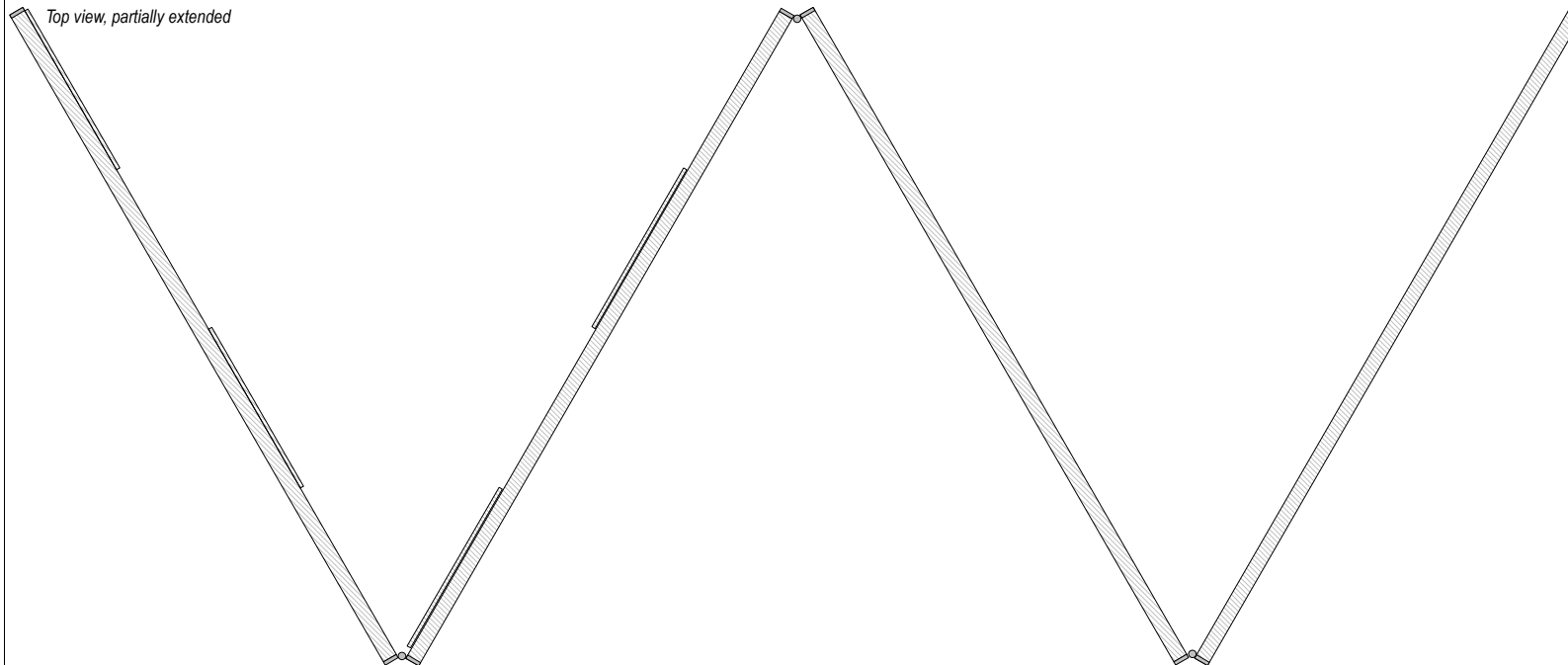
optional support placement, simplified, top view



Hinge direction, simplified, top view



Hinge detail, fully extended, side view



Top view, partially extended

optional support placement, simplified, side view

